

**Office of Education**  
**Education Centers**

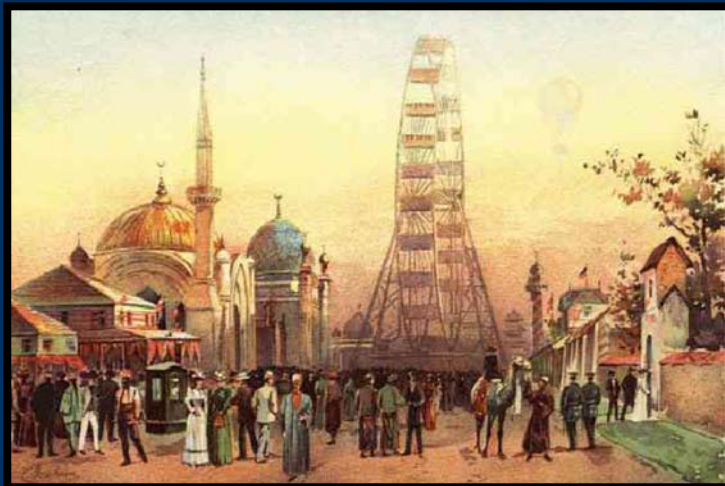
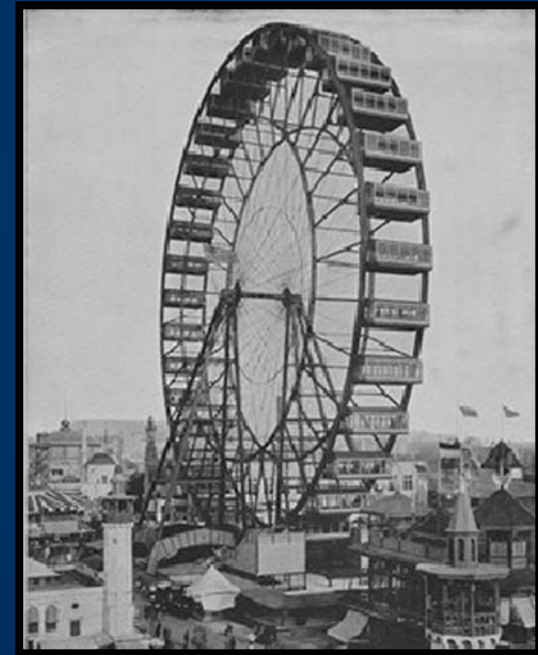
**2005 Program Highlights**

# Kline Creek Farm - 2005



**Harvest Time**

# Kline Creek Farm - 2005



**1893 Columbian  
Exposition Exhibit**

# Kline Creek Farm - 2005



**Barn Raising**

## Kline Creek Farm - 2005



**The Social Evils of  
Alcohol and Drugs**

## Kline Creek Farm - 2005



Farm Ledger



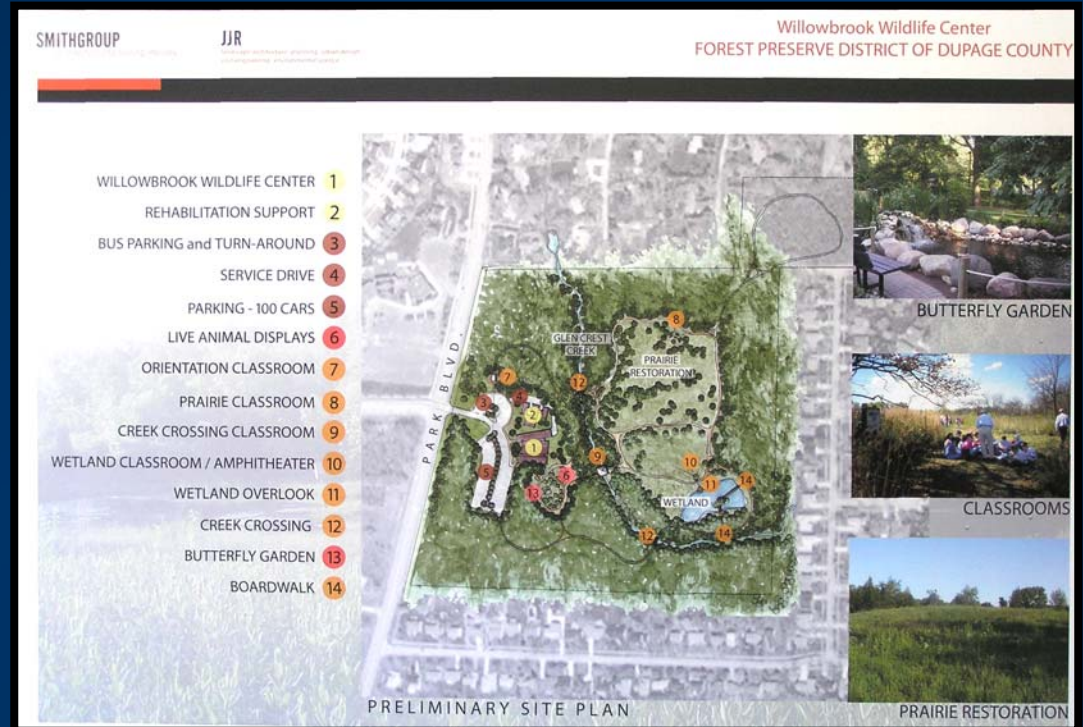
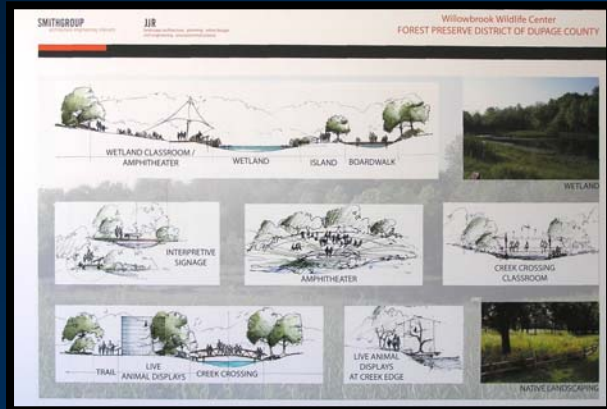
Sausage Stuffer



Cut Work Placemat

**Artifact Collections  
Management**

# Willowbrook Wildlife Center - 2005



**Architectural Review and Site Plan Completed**

## **Willowbrook Wildlife Center - 2005**



**Blanding's Turtle Captive Rearing Project with Natural Resources and Cosley Zoo**



**Barn Owl Reintroduction Project with Natural Resources and Springbrook Nature Center**

**Community Partnerships**



# Willowbrook Wildlife Center - 2005



**Cooperative rehabilitation and release of injured birds collected by the City of Chicago's Bird Collision Monitoring Group**



**Butterfly Garden Project with U of I Master Gardener's Program**

**Community Partnerships**

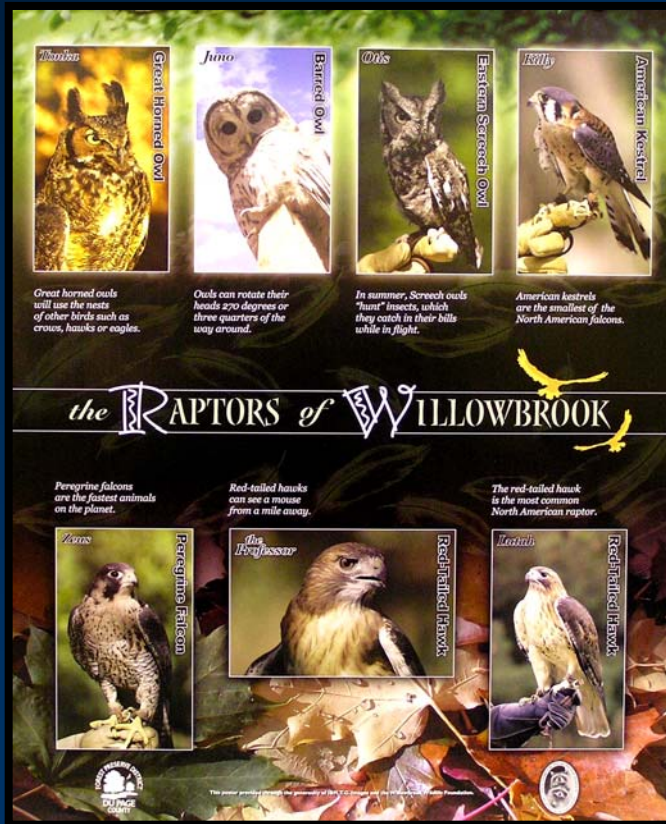
## Willowbrook Wildlife Center - 2005

- ☐ The public brought in over 6,000 animals
- ☐ 469 of these animals were assessed and determined to be healthy enough for the public to return them to the wild.
- ☐ 3,100 animals were severely injured and died or were euthanized before rehabilitation.
- ☐ 2,000 successfully rehabilitated and released.
- ☐ Over 30,000 people were assisted over the telephone.



**Help County Residents with  
Wildlife Concerns**

# Willowbrook Wildlife Center - 2005



Major Donations & Grants

# Fullersburg Woods Nature Education Center - 2005



Earth Day



Maple Syrup Sundays

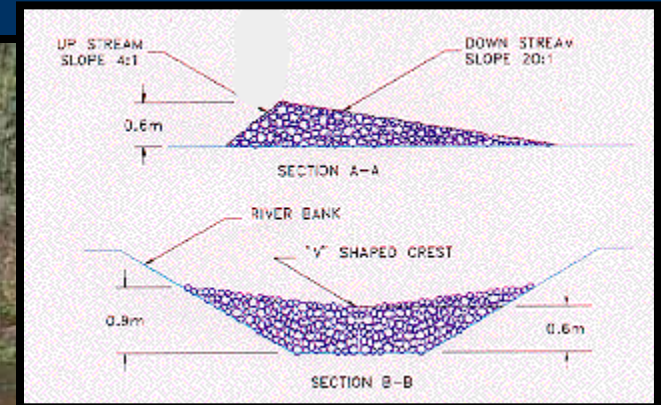


Halloween Walks

Special Events



# Fullersburg Woods Nature Education Center - 2005



**Grant Received for Riffle Habitat Aquarium Exhibit**

# Fullersburg Woods Nature Education Center - 2005



**Grant Received for Bass In  
The Class Program**

# James "Pate" Philip State Park Visitor Center - 2005



**Naturalists Honored  
for 2005 Programming**



# James "Pate" Philip State Park Visitor Center - 2005



**Fire on the Prairie**

# James "Pate" Philip State Park Visitor Center - 2005



**Preschool Programs**



**Merit Badge Programs**




**Star Gazing**

**Diverse Program Offerings**


# Mayslake Peabody Estate - 2005

*Creative Spirit*

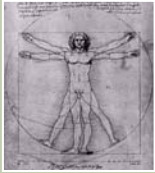


**Vision**


*Environmental Literacy*



*The Art of Storytelling*




**Legacy**



**Mayslake Peabody Estate Master Plan**

Mayslake Hall & Learning Institute

Historic Preservation 

**Master Plan Adopted**

# Mayslake Peabody Estate - 2005



**Professional Development**

# Mayslake Peabody Estate - 2005



**First School Tour**



**High Tea**



**First Folio Performances**



**Restoration in Progress Tours**

**Full Schedule of Programming**

## Danada Equestrian Center - 2005



**Wild Mustang Program**

# Danada Equestrian Center - 2005



**Hay Rides**



**Field Discing at Kline Creek Farm**



**Sleigh Rides**

**Draft Horse Teams At Work**

# Danada Equestrian Center - 2005



**Summer Horse Camps**



## Education Statistics - 2005

- ▣ Casual Visitors – 271,379
- ▣ Special Events – 35,754
- ▣ On-site Programs – 35,896
- ▣ Off-site Programs – 19,599
- ▣ On-going Classes & Summer Camps - 857
- ▣ Volunteers - 523
- ▣ Volunteer Hours – 51,328

# **Office of Education**

## **Education Outreach**

**2005 Highlights & 2006 Work Plan**

# Formal Education



**Teacher Opportunity Guide**

# Formal Education



**Teacher Education**

# Formal Education



**BENEDICTINE UNIVERSITY**  
**Master of Science partnership**

# Formal Education

- ☐ Downers Grove Curriculum Restructuring
- ☐ Naperville High School  
Advance Placement Environmental Science Course
- ☐ Hinsdale High School Salt Creek project
- ☐ Hanover Park School District 20

**Curriculum Planning**

# Formal Education



**West Branch River Valley  
Project Carrier School**

# Formal Education



- ☐ **Mighty Acorns Program**  
partnership with Chicago Wilderness
- ☐ Expand Home School programming
- ☐ Chicago Wilderness Education Team Workshops



**New Program Development**



# Formal Education



**Brewster Creek Mastodon Dig**

# Office of Education

## Highlights for September 2005

**Memorandum of Understanding signed with Archery Trade Association...**

In September Commissioner Jim Cantore and Executive Director, Brent Manning traveled to Nashville, TN to attend the Archery Trade Association's luncheon at the International Association of Plant and Wildlife Agencies Annual Meeting. At this meeting The Forest Preserve District of DuPage County (FPDC) and the Archery Trade Association and its archery foundation, Arrow-Sport (ATA/AS) signed a Memorandum of Understanding to promote archery as a recreational sport and to develop archery as a lifelong sport for the citizens of DuPage County.

Specifically the District and ATA/AS will work in partnership to make the archery facility at Willowbrook Forest Preserve, a state of the art archery range. The District also committed to making archery available for all classes within DuPage County, and in incorporating archery into their scope recreational programs, including after school and summer programs. In doing so, the Office of Education working in cooperation with the Office of Land Management will be implementing a community-wide

## Office of Education

### West Branch River Valley Project Open House...

On October 30<sup>th</sup>, the Forest Preserve District of DuPage County and the County of DuPage will be co-hosting an open house to discuss and inform citizens about proposed restoration projects that are part of the West Branch River Valley Feasibility Program. The open house will address concerns and provide opportunity for public comment and involvement during an informal gathering. The event will be held in the atrium of the District's Dennis Forest Preserve from 6:30PM to 8:00 PM.

The objectives of the meeting are:

- Identify the purpose, need and benefits of the proposed restoration projects to promote an understanding of how to protect ecosystems effectively.

### Master of Science Degree in Science Teaching...

Benedictine University has invited the District to join them in the creation of a non-thesis, competency-based master's degree primarily directed towards middle school teachers, elementary school teachers, and informal educators. All courses will follow an inquiry-based format. In addition to courses being taught at the science sites of Benedictine University, many of the educational content courses will be taught at the educational sites of the partnership organizations. These sites include The Morain Laboratory, Emerald

- Establish a timeline and schedule for anticipated projects
- Identify impacts to forest preserve visitors and neighbors
- Identify anticipated natural resource benefits
- Explore the proposed restoration project's decision-making process
- Establish necessity for public acceptance

Along with DuPage County, the Forest Preserve Districts of Education, Natural Resources, Operations, and Public Affairs staff, will be on hand to interpret the District's connection to the West Branch River Valley restoration projects.

At the Forest Preserve District of DuPage County and Penn State Habitat Conservation Laboratory. Thirty-two credit hours will be required. The remaining hours will be taught at and by the partnership affiliates. The remaining hours will include one field-based research/internship course, and a nine-hour core. The Golden Apple Foundation will also be a partner in creating and implementing this Master's level program.

## Highlights for January 2006

### Natural History Survey

Several years ago Naturalist, Carl Sprang began documenting the natural history of Willowbrook Forest Preserve. This project was initiated in concert with the habitat restoration work led by Natural Resources. The Natural History Survey of Willowbrook began in January of 1999.

the documentation process. Announced Nature Programs have been offered in the past to include the public on Carl's morning and afternoon rounds. Casual visitors can also record their observations and wildlife sightings in an observation log kept in Willowbrook's lobby.



Beaver marked their tracks

Willowbrook's "Back 40" is being restored as a showcase restoration project for the District. Willowbrook has over 100,000 visitors annually. Many of these visitors frequent the preserve several times each year. They have been able to observe some dramatic changes in the prairie and woodlands along the 1-mile nature trail loop. The wetland remains a challenge due in no small part to the antics of muskrats that



Many great muskrats that live

Over the years Willowbrook's visitors have been encouraged to join us in

All of the Natural History Survey summaries are now posted on the District's Intranet Site. I will continue to post these summaries each month.

## Monthly Highlights

# Office of Education



**New Program Development**

# Offices of Education & Land Management



**Fishing Clinics**



**Boater Safety**



**Archery Clinics**



**Family & Youth Group Camping**

**Outdoor Skills Programming**

# Offices of Education & Natural Resources



**Merit of Restoration  
Pilot Program**

# Offices of Education, Natural Resources & Public Affairs



**West Branch  
River Valley Project**

# Office of Education



*Mayslake Peabody Estate*

## Architecture

Mayslake Hall is an outstanding example of the Tudor Revival, a style loosely based on a variety of medieval English building traditions. In fact, the Peabody Mansion is very similar in appearance to Compton Wynyates, a 15th-century manor house in Warwickshire, England. Mayslake Hall's irregular massing, decorative half-timbering, groups of tall, narrow windows and ornamental chimney pots are all indicative of the Tudor Revival style. The 39-room mansion displays excellent integrity in terms of its setting, materials, stylistic details and plan. Of special interest are a magnificent staircase of hand-carved, imported walnut, an elegant wood paneled library, and a secret staircase leading from the second floor to the bomb-proof basement.

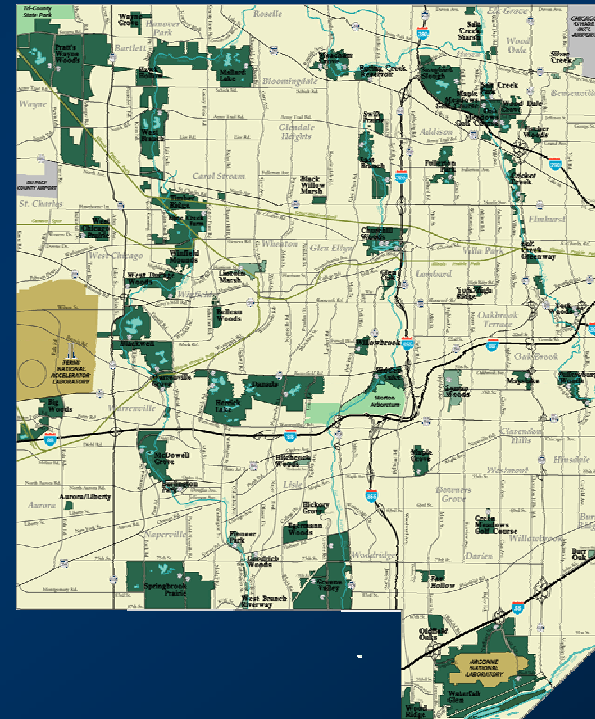


**Interpretive Signs**

# Offices of Education & Planning



**Danada Visitor Garden**



**District-wide  
Interpretive Planning**



# Offices of Education & Public Affairs

## Historic Sites



## Showcase Natural Areas Restoration



## Garden Tour

**Interpretive Brochures**

# Offices of Education



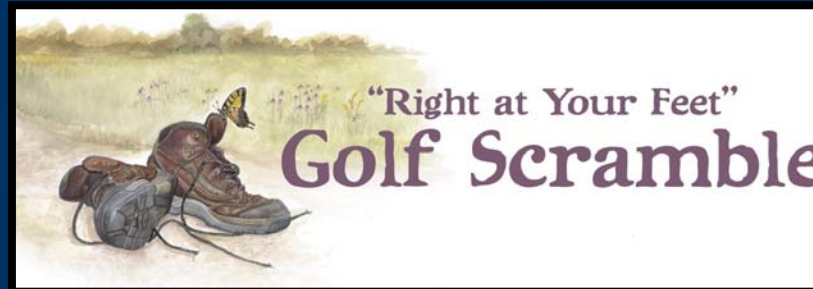
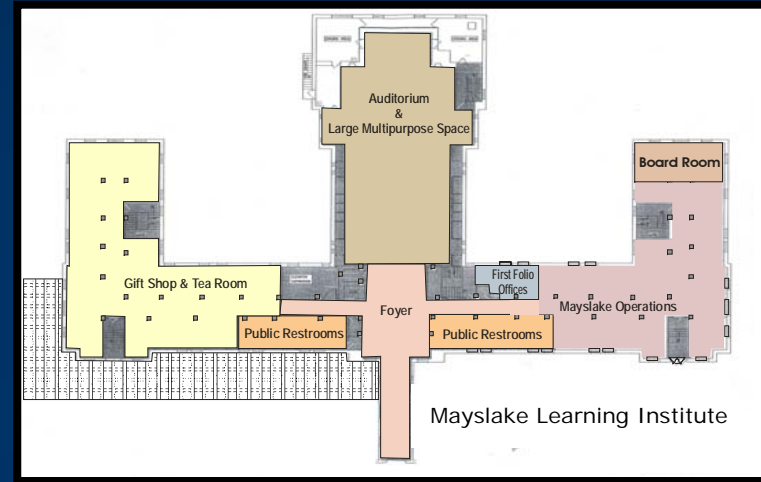
**Artifact & Biofact  
Management & Storage**

# Offices of Education

- ☐ Outreach Programs
- ☐ Announced Nature Programs
- ☐ Lecture Series
- ☐ Summer Youth Camps
- ☐ On-site School Programs
- ☐ Self-guided Tours
- ☐ Hay Rides
- ☐ Scout Programs
- ☐ High Teas
- ☐ Teacher Workshops
- ☐ Special Request Programs
- ☐ Riding Clinics
- ☐ Special Events

**Centralized Program  
Reservation System**

# Office of Education



**Fund Raising**

# Office of Education



# **Office of Education**

## **Education Centers**

**2006 Work Plan**

## 2006 Work Plan



**Kline Creek Farm**

# 2006 Work Plan



**Willowbrook Wildlife Center**

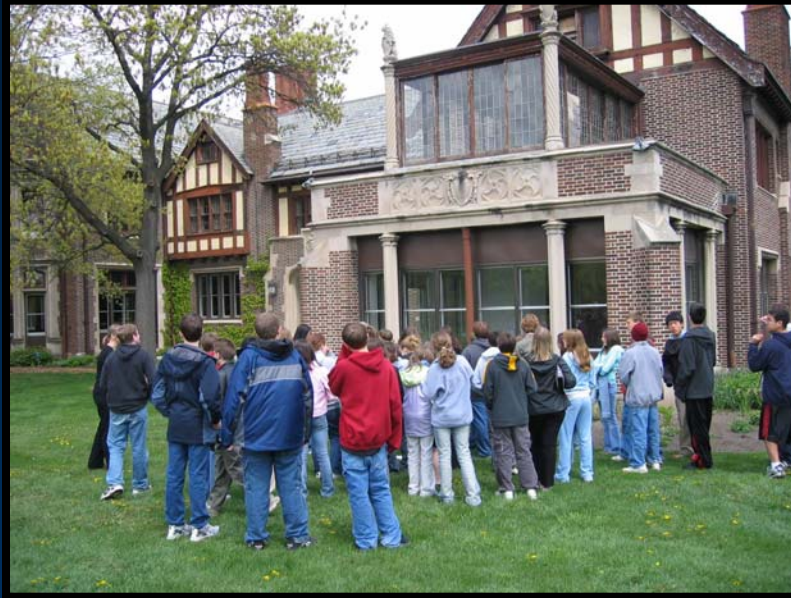


# 2006 Work Plan



**Fullersburg Woods  
Nature Education Center**

# 2006 Work Plan



**Mayslake Peabody Estate**

## 2006 Work Plan



**James "Pate" Philip State  
Park Visitor Center**

## 2006 Work Plan



**Danada Equestrian Center**

# Office of Education

